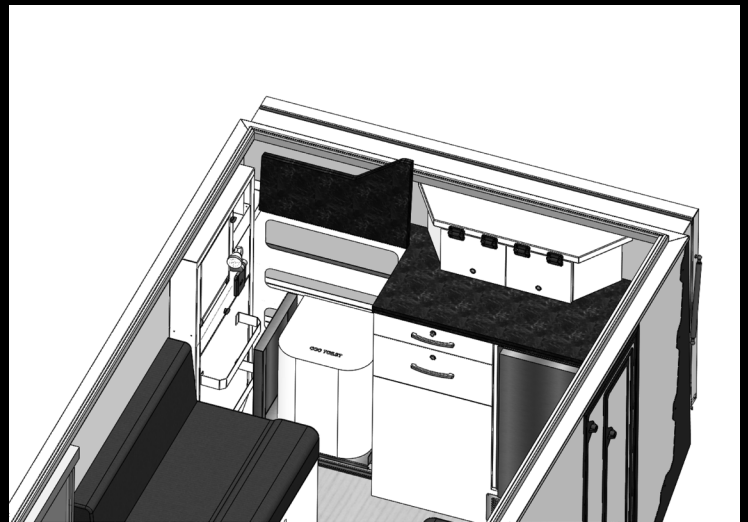
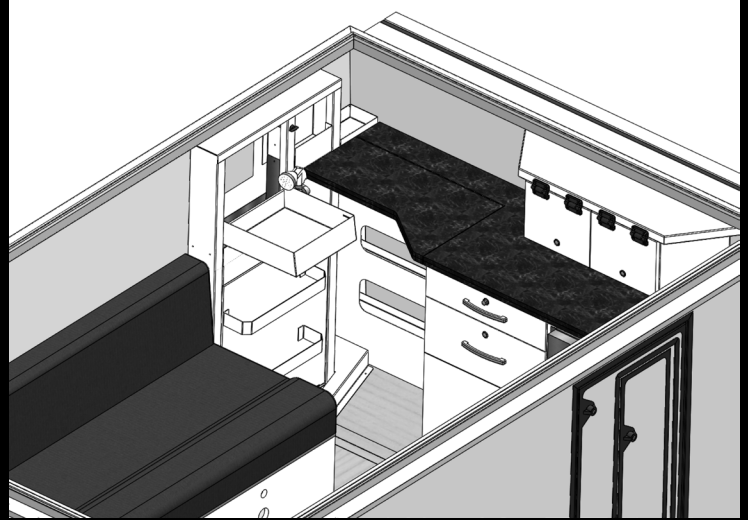
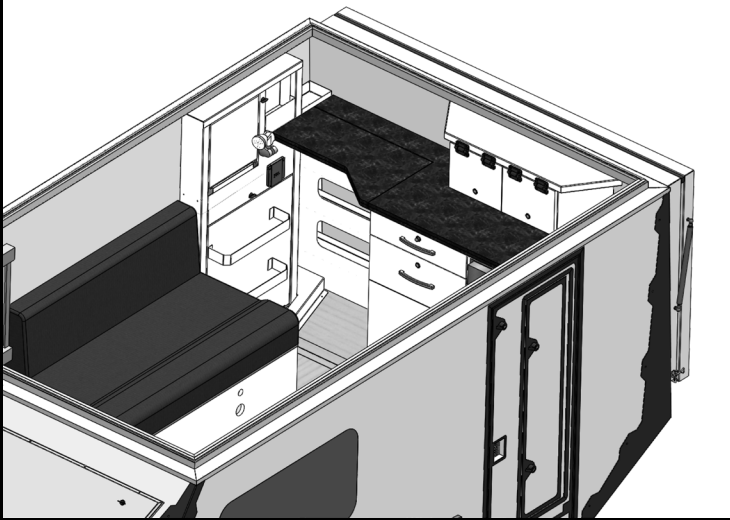


# ODYSSEY

*Signature*

**SIGNATURE**



**COMPACT YET PACKED WITH FEATURES  
INCLUDING AN INTERNAL TOILET & SHOWER.**

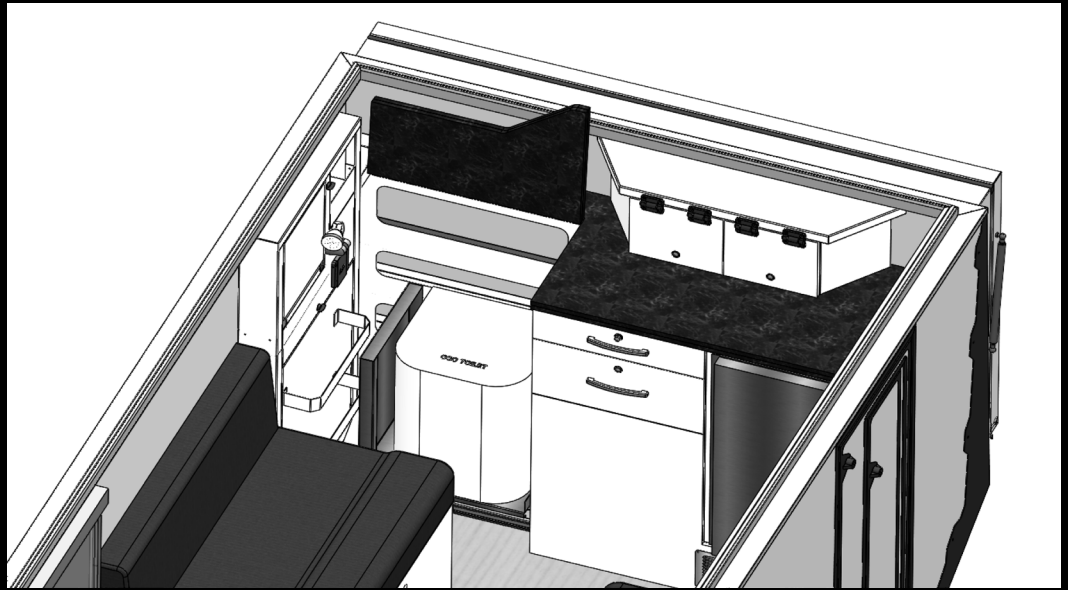
**AOR**  
AUSTRALIAN OFF ROAD

# ODYSSEY SIGNATURE

## 11' POP TOP CAMPER

Experience the Odyssey Signature, encompassing all the outstanding attributes of the Odyssey and beyond.

The design of this innovative 11' hybrid seamlessly integrates an internal shower and toilet blending the best of many worlds - compactness, safety and comfort.



## MARKET FIRST 11' HYBRID WITH SHOWER & TOILET

### TRAILER

**Tare** 1440kg

**ATM** 2000kg (opt 2200kg)

**Payload** 560kg

**Drawbar** 105kg

**Brakes** 12" Electric brakes

**Coupling** DO35 rated 3500kg

**Chassis** Supergal high tensile steel powercoated

**Suspension** Independent twin trailing arm

**Body** Fibreglass

**Wheels** 17" x 8" Steel rims, 265/70/17 AT tyres, 1 spare

**Style** Pop top single axle

### DIMENSIONS

**Total overall** 5400mm/17'7"(l)

**Body** 3600mm(l) 1950mm(w) 2335mm (h)

**Internal** 3360mm/11'(l) 1900mm(w) 2050mm(h)

**Awning size** 3m wind out

### LIFESTYLE

**Battery** 300AMP lithium

**Inverter** 1000W pure sinwave

**Solar** 2 x 175w roof mounted

**Cooling** 1 x Sirocco fan

**Gas** Gas HWS

**Water** 140L water storage

**Amenities** Int shower/toilet, ext shower pod, h/c taps

**Kitchen** Ext s/s kitchen, 3 burner stove  
pantry, h/c sink

**Fridge** Int Vitrefrigo 130L fridge/freezer

**Seating** Cafe dinette (4p)

**Sleeping** Queen size bed, lift up

**Berth/Bunks** 2

