

HITCHMASTER DO35 can be used with load distribution hitches providing the coupling movement is not obstructed and the maximum downward load of 350kg is not exceeded.

Mounting the DO35 COUPLING onto trailer drawbar:

Bolt-on Always use at least four mounting bolts (two in front holes/slots) to secure Coupling to Trailer. For trailers over 2500kg ATM we recommend the use of 6 mounting bolts. Use minimum M12 Class 8.8 or ½" Grade 5 bolts with Nylon insert nuts or spring washers. Fasten to 75N.m and 90N.m respectively

Weld-on Run weld fully down both sides of the base plate, with a minimum 25mm long weld on the front of the base plate.

A drawbar weight of at least 50 kg and not exceeding 350 kg is recommended

Mounting the DO35 TOWING PIN onto vehicle Tow bar:

- Fit Towing Pin to Tow bar using new spring washer, 7/8" UNF nut and C-spanner supplied.
- Tighten 7/8" nut to 440N.m (325lbs.ft).

COUPLING:

For coupling the DO35 to your vehicle, we recommend the following:

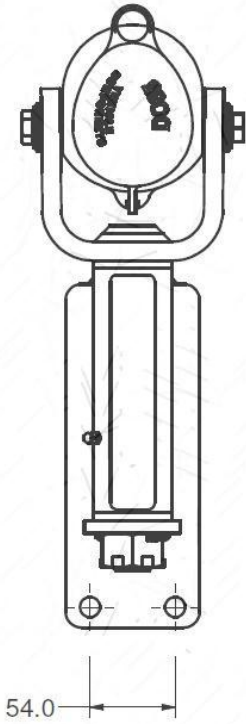
1. Trailer should only be coupled (and uncoupled) on level ground.
2. Make sure Towing Pin and Universal is free of sand, dirt and foreign objects, and is lightly **lubricated**.
3. Raise height of trailer coupling above vehicle Towing Pin by adjusting Jockey Wheel or Stand.
4. Push and hold Lock Button down, push the Lock Plate to full open position until the Lock Button is able to spring back
5. Align Coupling over Towing Pin by moving either vehicle or trailer, and lower Coupling onto Towing Pin. Ensure that Universal is fully seated on Towing Pin.
6. Push the Lock Button to release the plate into the locked position.
7. Assemble the dust cover by snapping in the back edge of the seal first and then pushing down on the front. Dust cover will emit an audible snap when assembled correctly.

MAINTENANCE & SAFETY

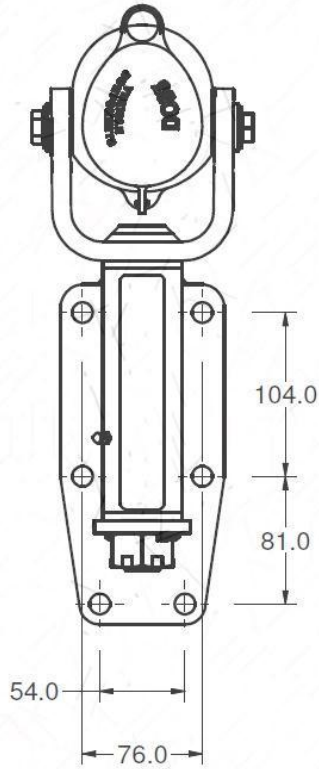
- Keep hands and fingers clear of coupling when attaching.
- Ensure trailer safety chains are attached whilst coupling or uncoupling.
- Keep Towing Pin and Universal mating surfaces clean and lightly greased at all times.
- Check condition of O-Ring and replace if necessary (VC part no 18D HM 101).
- Regularly lubricate grease points with multi-purpose grease.
- Check all bolts regularly for tightness.
- Do not use Towing Pin or Coupling for recovery purposes.
- Periodic adjustment of Slotted Nut & Pin may be required and should be performed by a competent person.
- Flush with water if locking mechanism does not open fully due to dirt ingress.



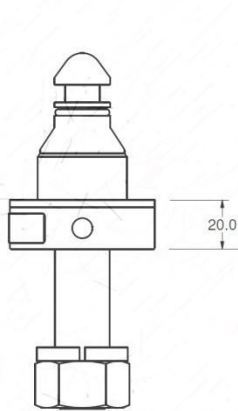
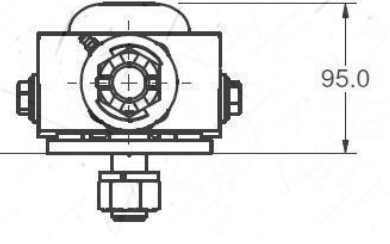
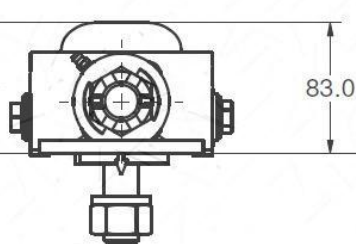
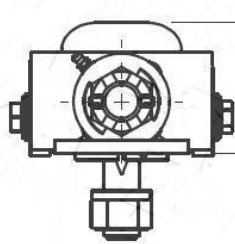
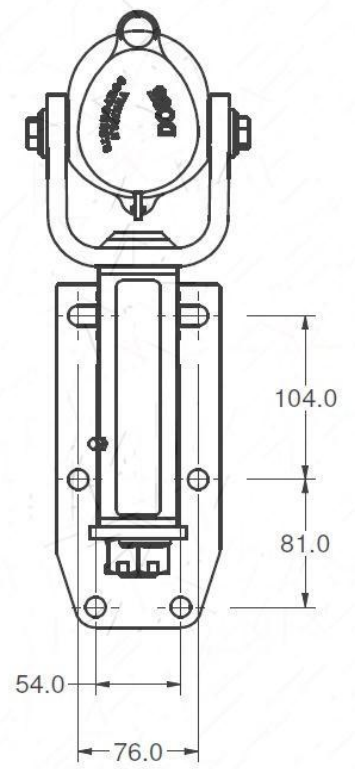
V2-W
Weld-On



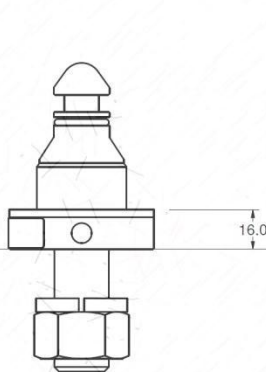
V2
Standard



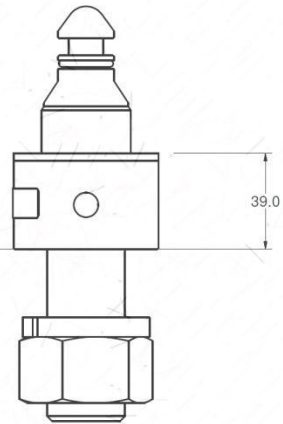
V2-R
Raised



TP-W
7/8 TowPin
Weight Distribution Hitches
(eg. Hayman Reece Classic)



TP-S
Standard Towpin



TP-WX
1-1/4 Extended Towpin
Weight Distribution Hitches
(eg. Hayman Reece Standard)